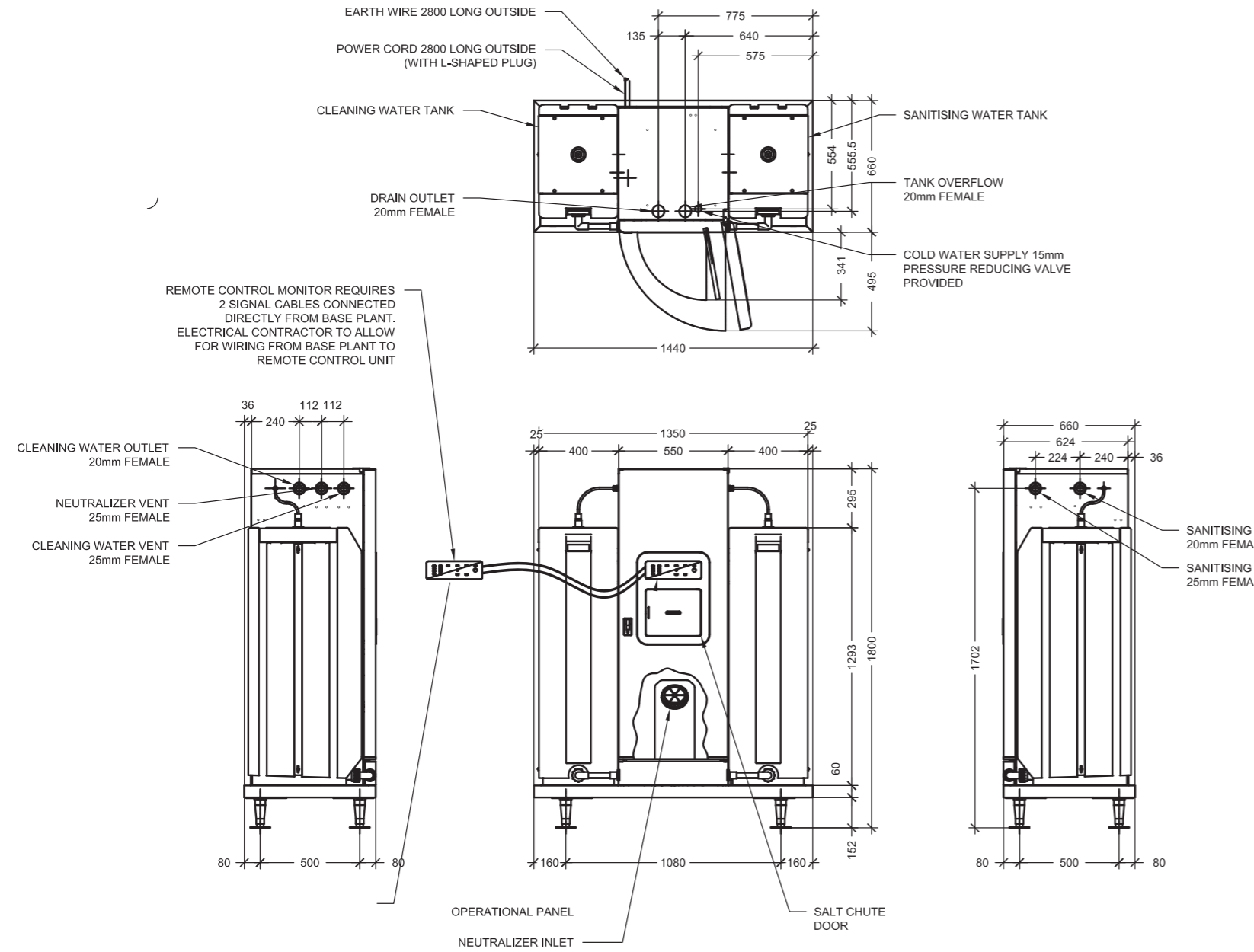


# ROX 60-200 SYSTEM SPECIFICATION



## KEY SERVICES AND DESIGN REQUIREMENTS

Please refer to the hydraulic design guide for full installation considerations and specifications

BASE PLANT																		
REF	DESCRIPTION	PLANT DETAILS							ELECTRICAL DETAILS			CONNECTION DETAILS						COMMENTS
		CAPACITY (L)	MANUFACTURER	MODEL	PHYSICAL DIMENSIONS (mm)	SPATIAL REQUIREMENT (mm)	DRY WEIGHT (kg)	WET WEIGHT (kg)	LOAD	NECESSITY	BMS	COLD WATER INLET (mm)	CLEANING WATER OUTLET (mm)	SANITIZING WATER OUTLET (mm)	VENT (mm)	TANK OVERFLOW (mm)	DRAIN OUTLET (mm)	
eWS-BP-1	eWATER SYSTEMS BASE PLANT ROX 60	200	HOSHIZAKI	ROX 60	1350L x 660W x 1800H	1350L x 1160W x 1800H	250	450	1 x 240V, 50 Hz, 10 Amp GPO's	NON ESSENTIAL	NO	1 x 20mm	1 x 20mm	1 x 20mm	3 x 25mm	1 x 20mm	1 x 20mm	- CLEAR ACCESS REQUIRED AT FRONT OF PLANT AND 500mm REQUIRED AT BACK OF PLANT - ALLOW TEST POINT VALVE ON EACH LINE FROM BASE PLANT - THERE ARE TWO IWAKI MD 70RZV PUMPS SUPPLIED AND INTEGRATED WITHIN BASE PLANT, ONE FOR SANITISING SOLUTION THE OTHER FOR CLEANING SOLUTION - BOTH PUMPS ARE ENCASED AND LOCATED WITHIN THE BOTTOM OF THE PLANT. - MD 70 RZV 50HZ HAS MAXIMUM CAPACITY 40-43 LITRES PER MINUTE - THE PUMPS CAN PUMP TO A MAX HEAD HEIGHT OF BETWEEN 14.3 M - 20.3 m